

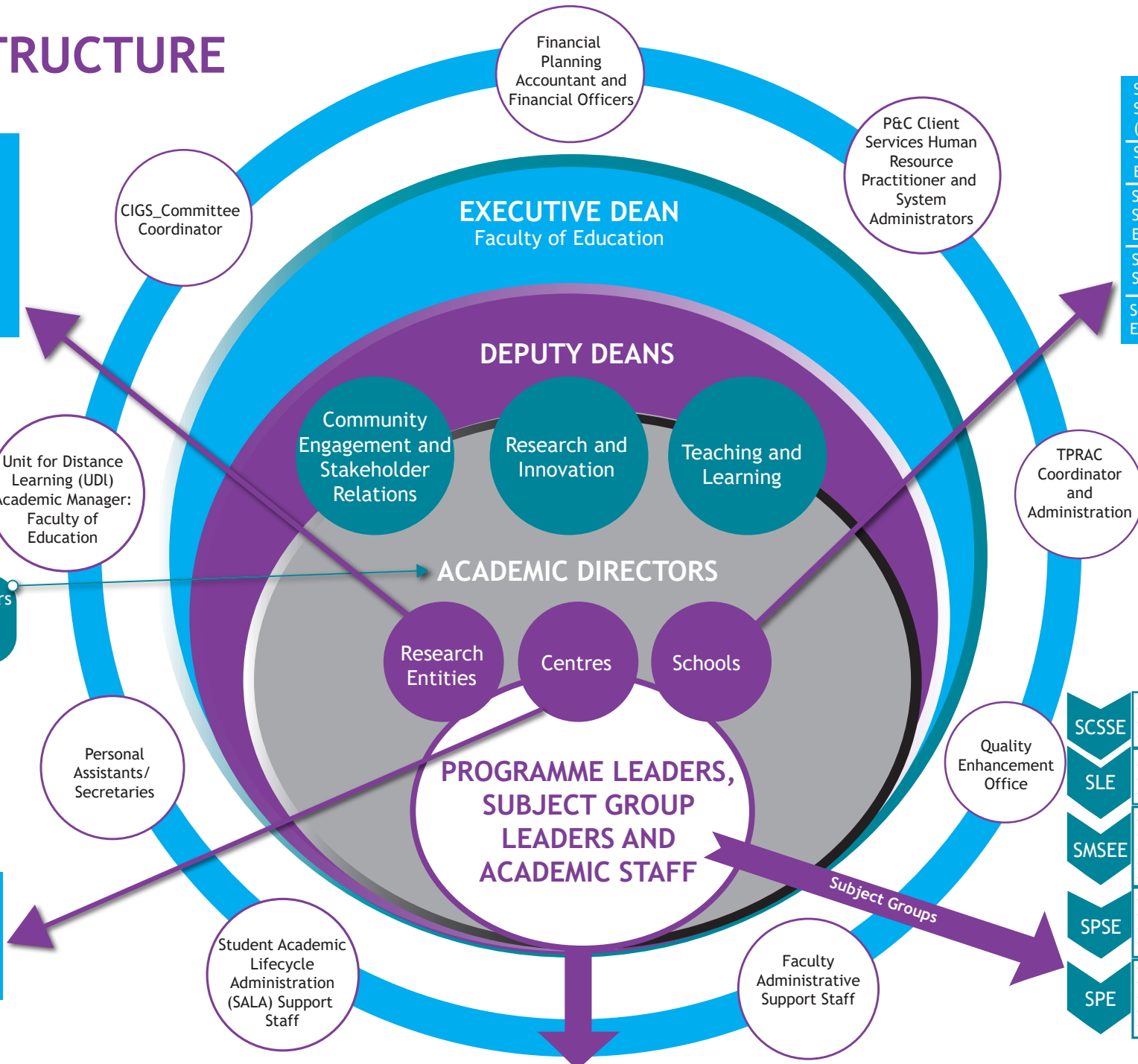
# FEDU'S STRUCTURE

Research Unit Education and Human Rights in Diversity (Edu-HRight)  
 Research Unit Self-Directed Learning (SDL)  
 Research Focus Area Community-based Educational Research (COMBER)

School of Commerce & Social Studies in Education (SCSSE)  
 School of Language Education (SLE)  
 School of Mathematics, Science & Technology Education (SMSTE)  
 School of Professional Studies in Education (SPSE)  
 School of Psycho-Social-Education (SPE)

- Research Entity Directors
- School Directors
- Centre Directors

Centre for Higher Education Professional Development (CHEPD)  
 Centre for African Language Teaching (CALT)



- |       |  |
|-------|--|
| SCSSE | <ul style="list-style-type: none"> <li>• Creative Arts in Education</li> <li>• Economic Management Science Education</li> <li>• History for Education</li> </ul>   |
| SLE   | <ul style="list-style-type: none"> <li>• Afrikaans for Education</li> <li>• English for Education</li> <li>• African Languages for Education</li> </ul>  |
| SMSEE | <ul style="list-style-type: none"> <li>• Computer Science Education</li> <li>• Geography and Environmental Education</li> <li>• Natural Sciences Education</li> <li>• Mathematics Education</li> <li>• Technology Education</li> </ul> |
| SPSE  | <ul style="list-style-type: none"> <li>• Curriculum Studies</li> <li>• Comparative and International Education</li> <li>• Education Law</li> <li>• Education Management and Leadership</li> </ul>                                      |
| SPE   | <ul style="list-style-type: none"> <li>• Early Childhood Development and Education</li> <li>• Educational Psychology</li> <li>• Learner Support</li> <li>• Life Orientation</li> <li>• Movement Education</li> </ul>                   |

- |  |  |   |  |  |   |   |   |  |
|--|--|---|--|--|---|---|---|--|
| Diploma in Grade R Teaching (Dip Gr) (NQF Level 6) | Advanced Certificate in Teaching (ACT) (NQF Level 6) | Advanced Diploma in Education (ADE) (NQF Level 7) | Bachelor of Education (BEEd) (NQF Level 7) | Postgraduate Certificate in Education (PGCE) (NQF Level 7) | Postgraduate Diploma in Education (PGDip) (NQF Level 8) | Bachelor of Education Honours (BEdHons) (NQF Level 8) | Master of Education (MEd) (NQF Level 9) | Doctor of Philosophy in Education (PhD) (NQF Level 10) |
|--|--|---|--|--|---|---|---|--|